

VARISPEED-616G5 OPTION CARD
DIGITAL REFERENCE CARD DI-16H2
INSTRUCTIONS

Upon receipt of the product and prior to initial operation, read these instructions thoroughly, and retain for future reference.




NOTES FOR SAFE OPERATION


Read this instruction manual thoroughly before installation, operation, maintenance or inspection. In this manual, the NOTES FOR SAFE OPERATION is classified as “CAUTION”.



Indicates a potentially hazardous situation which, if not avoided, may result in minor or moderate injury to personnel and damage to equipment.

It may also be used to alert against unsafe practices.

Even items described in  may result in a vital accident in some situations. In either case, follow these important items.

 : These are steps to be taken to insure proper operation and to avoid malfunctions, etc.

- The option card uses C MOS IC chips. It may break if touched by bare fingers because of static electricity. Be careful when handling.
- When removing the option card from the inverter for transportation or storage, put the card into the anti-static package it was in when delivered.
- Never change wiring or connect or disconnect connectors while the power is ON.

Failure to observe this caution may injure you.

The digital reference card, DI-16H2 is mounted on the control board of the inverter to set up digital speed references. To set up references using DI-16H2, set the b1-01 operation mode selection constant to 3 (option). For the values of other constants, refer to ‘descriptive manual for constants’ (manual No. TOEZ-S616-10.11).

This option card is applicable to the following inverter series:
 VS-616G5: Entire series

Name	Code No.	Functions
Digital reference card DI-16H2	73600-C016X	Input signal: Binary 16 bits/BCD 4 digits Binary 12 bits/BCD 3 digits Switch by S1 SIGN and SET signal input voltage: +24V (Power supply built in. Electrically isolated from internal circuit)

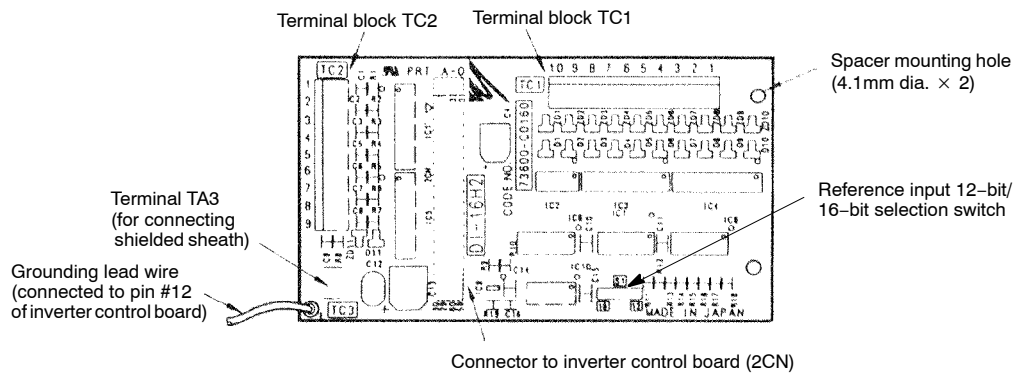


Fig. 1 Digital reference card DI-16H2



Before use,

- (1) Before using DI-16H2, read this manual and the manual for the installation of the inverter.
- (2) Before connecting DI-16H2 or external terminals, turn OFF main power of the inverter and verify the CHARGE indicator lamp of the inverter is OFF.
- (3) When ordering DI-16H2, specify the name and code number.

1 Inspection after Delivery



CAUTION

- Verify that ordered products have been delivered.
Installation of a wrong device may lead to injury or damage.

Though the products have undergone rigorous inspection before shipping, check the following for safety.

- Check the name written on the product to verify that ordered products have been delivered.
- Check for damage caused during transportation.

If there is anything uncertain on the structure, contact your YASKAWA representative.

2 Installing to Inverter (See Fig. 2)

2.1 Installation Procedure

- ① Turn OFF the main power and wait for the time specified on the cover of the inverter. Remove the cover and verify that the CHARGE indicator lamp is OFF.
- ② Plug the 2CN connector of the digital reference card DI-16H2 into the 2CN connector (60 pins) on the control board of the inverter. Gently push DI-16H2 until the spacer engages the spacer hole of the option card on the control board. Fix DI-16H2 tightly. (See part A of the side view.)
- ③ After installing DI-16H2, connect the inverter with peripheral devices and replace the cover of the inverter.

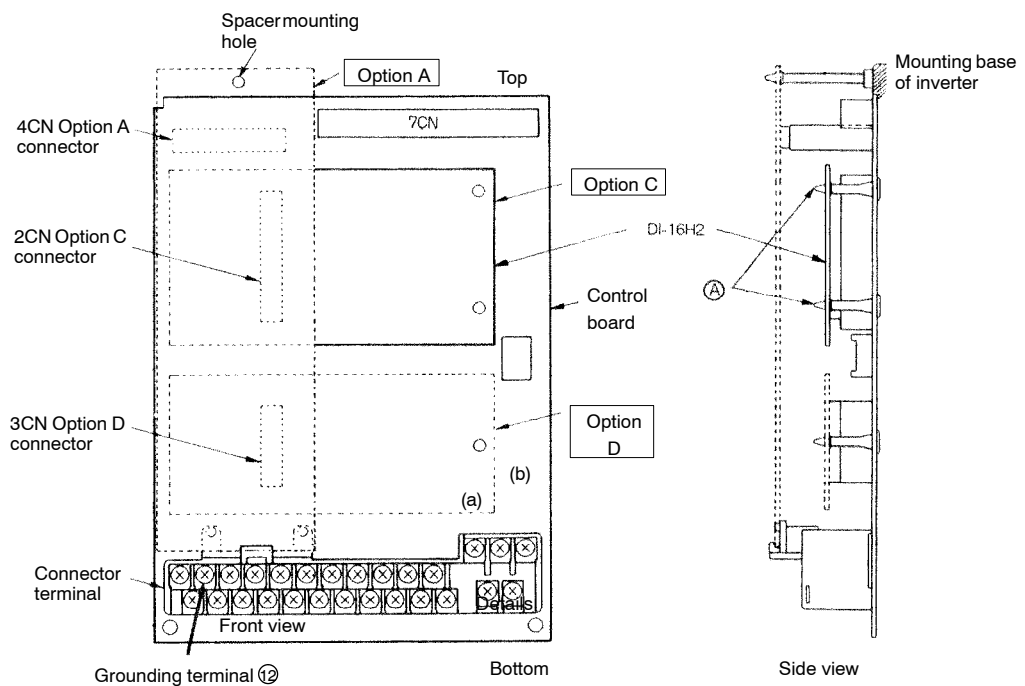


Fig. 2 Installation of digital reference card DI-16H2



Notes on wiring

- Separate the control signal wires (from terminals TC1, TC2, and TC3) of the DI-16H2 from the main circuit wires and other power cables.
- Use a shielded wire to connect to TC1 and TC2. Connect the wire as shown in Fig. 4 to prevent interference by noise. The wire must be 50m or shorter.

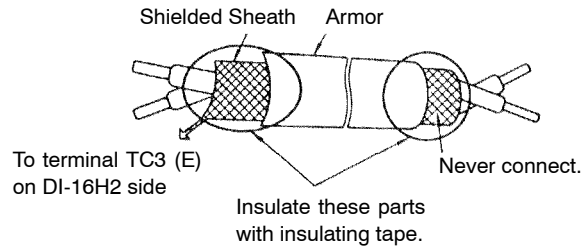


Fig. 4 Shielded wire termination

4 Wiring

See Table 1 for the functions of the input terminals. The functions can be selected by combination of constant F3-01 setting (frequency reference setting selection) and switch S1 (reference input 12-bit/16-bit selection).

Table 1 Digital reference input terminal functions

Terminal block symbol	Pin No.	Input signal type *							
		With SIGN 12-bit binary	Without SIGN 16-bit binary	With SIGN BCD 3 digits	With SIGN BCD 4 digits	Without SIGN BCD 5 digits			
		F3-01: 7 S1: 12 bits	F3-01: 7 S1: 16 bits	F3-01: 0 to 5 S1: 12 bits	F3-01: 0 to 5 S1: 16 bits	F3-01: 6 S1: 16 bits			
TC1	1	Bit 1 (2^0)	Bit 1 (2^0)	1	BCD 1 digit (0 to 9)	1	BCD 1 digit (0 to 9)	2	BCD 1 digit (0, 2, 4, 6, 8)
	2	Bit 2 (2^1)	Bit 2 (2^1)	2		2		4	
	3	Bit 3 (2^2)	Bit 3 (2^2)	4		4		8	
	4	Bit 4 (2^3)	Bit 4 (2^3)	8	8	1	BCD 2 digits (0 to 9)		
	5	Bit 5 (2^4)	Bit 5 (2^4)	1	1	2			
	6	Bit 6 (2^5)	Bit 6 (2^5)	2	2	4			
	7	Bit 7 (2^6)	Bit 7 (2^6)	4	4	8	BCD 3 digits (0 to 9)		
	8	Bit 8 (2^7)	Bit 8 (2^7)	8	8	1			
	9	Bit 9 (2^8)	Bit 9 (2^8)	1	1	2			
	10	Bit 10 (2^9)	Bit 10 (2^9)	2	BCD 3 digits † (0 to 15)	2	BCD 3 digits (0 to 9)	4	BCD 4 digits (0 to 9)
1	Bit 11 (2^{10})	Bit 11 (2^{10})	4	4	4	8			
2	Bit 12 (2^{11})	Bit 12 (2^{11})	8	8	1	BCD 5 digits (0 to 3)			
3	—	Bit 13 (2^{12})	—	—	1		BCD 4 digits (0 to 9)		
4	—	Bit 14 (2^{13})	—	—	2				
5	—	Bit 15 (2^{14})	—	—	4	8			
6	—	Bit 16 (2^{15})	—	—	8	1			
7	SIGN signal (0: forward, 1: reverse)							2	
8	SET (read) signal (1: read) ‡								
9	Input signal common (0V)								
TC3	Shielded connection terminal								

* At the digital reference, internal signal reads “0” when input signal is open, and reads “1” when input signal is closed (between the signal and common terminal). Selection switch S1 is used for 12-bit/16-bit selection of input signal.

† The first digit can be set between 0 and 15 at BCD input.

‡ Set (read) signal is the signal to read digital reference data. When reading, close between terminals TC2-8 and TC2-9 by the timing shown in Fig. 5

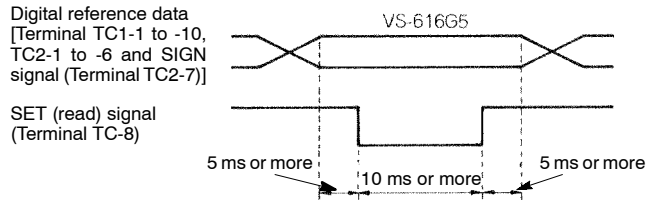


Fig. 5 Timing of digital reference read signal

Make sure the followings when wiring.

- To prevent noise, use shielded wire and separate from heavy current circuits (200VAC or greater) or relay drive circuits. (Wire length must be 50m or shorter.)
- Connect both ends of the unused wire of the shielded wire to the 0V terminal.
- Connect the grounding lead wire (E) to pin ② of the control board of the inverter.
- Applicable wire sizes for terminal block TC1 and TC2 are shown below.
[Terminal: MKDS1 series manufactured by Phoenix Contact GmbH & Co.]

	[mm ²]	AWG	I [A]	VAC [V]
Thin twisted wire	1	16	12	125
Solid wire	1.5	16	12	125
UL	—	22-16	10	300
CSA	—	28-16	10	300
CSA	—	28-16	10	150



Terminal block TC1, TC2 side
Connecting wire end

NOTE

Notes on selecting cables

Too thick a cable applies pressure to the option card and may lead to failure.
Too thin a cable may lead to imperfect contact or a break in the wire.

5 Notes on Use of Input Signals

The input circuit of DI-16H2 receives outputs from relay contacts or (open collector) transistors. Note the points below:

- When using relay contacts for digital instruction signals, select highly reliable relay contacts (for weak current) of a contact capacity of 30VDC or greater and 100mA or lower.
- When using (open collector) transistors, select ones of a dielectric strength of 35VDC or greater, rated current of 30mA or greater.

6 Digital Reference Selection

For digital reference with this option card, set constant b1-01 (frequency reference selection) to “3” (DI-16H2 side).

Table 2 Digital reference selection

Constant setting		Switch S1 selection	Reference input mode	Reference setting range*	Monitor (U1-01) display unit	
o1-03	F3-01				o1-03=0	o1-03=1
0 or 1	0	12 bits	With SIGN BCD 3 digits, 1%	-110 to +110%	0.01 Hz	0.01%
		16 bits	With SIGN BCD 4 digits, 1%			
	1	12 bits	With SIGN BCD 3 digits, 0.1%	-110.0 to +110.0%		
		16 bits	With SIGN BCD 4 digits, 0.1%			
	2	12 bits	With SIGN BCD 3 digits, 0.01%	-15.99 to +15.99%		
		16 bits	With SIGN BCD 4 digits, 0.01%	-110.00 to +110.00%		
	3	12 bits	With SIGN BCD 3 digits, 1 Hz	-400 to +400 Hz		
		16 bits	With SIGN BCD 4 digits, 1 Hz			
	4	12 bits	With SIGN BCD 3 digits, 0.1 Hz	-159.9 to +159.9 Hz		
		16 bits	With SIGN BCD 4 digits, 0.1 Hz	-400.0 to +400.0 Hz		
	5	12 bits	With SIGN BCD 3 digits, 0.01 Hz	-15.99 to +15.99 Hz		
		16 bits	With SIGN BCD 4 digits, 0.01 Hz	-159.99 to +159.99 Hz		
	6	16 bits	Without SIGN BCD 5 digits, 0.01 Hz	000.00 to +399.98 Hz		
	7	12 bits	With SIGN 12-bit binary, 100%/4095	-4095 to +4095		
16 bits		With SIGN 16-bit binary, 100%/30000	-33000 to +33000			
2 to 39 †	—	12 bits	With SIGN BCD 3 digits, 1 r/min	-1599 to +1599 r/min	1 r/min	
		16 bits	With SIGN BCD 4 digits, 1 r/min	-15999 to +15999 r/min	1 r/min	
40 to x9999 ‡ (x=0 to 3)	—	12 bits	With SIGN BCD 3 digits, 100%/1st to 4th digit of o1-03 setting	-1599 to +1599	5th digit of o1-03 setting x=0: unit: 1 x=1: unit: 0.1 x=2: unit: 0.01 x=3: unit: 0.001	
		16 bits	With SIGN BCD 4 digits, 100%/1st to 4th digit of o1-03 setting	-10999 to +10999 (when o1-03=9999)		
x0000 (x=1 to 3)	—	16 bits	With SIGN BCD 4 digits, 100%/10000	-11000 to +11000		

- * • Value when max. output frequency (E1-04) is 400 Hz and frequency reference upper limit (d2-01) is 110%.
- Setting range upper limit \leq max. output frequency (E1-04) or frequency reference upper limit (d2-01)
Setting range lower limit \geq min. output frequency (E1-09) or frequency reference lower limit (d2-02)
- The first digit can be set between 0 and 15 at BCD input.
- † • Set number of motor poles in o1-03 (setting/display unit of frequency reference/monitor).
• Output frequency (F) = reference set value (r/min) \times (o1-03 setting) / 120
- ‡ Setting example for o1-03:
When o1-03=12000, reference input at 100% is 2000 and monitor display becomes 200.0.

For setting and selecting constants, refer to the constants list in ‘descriptive manual for constants’ (Manual No. TOEZ-S616-10.11).

VARISPEED-616G5 OPTION CARD DIGITAL REFERENCE CARD DI-16H2 INSTRUCTIONS

TOKYO OFFICE

New Pier Takeshiba South Tower, 1-16-1, Kaigan, Minatoku, Tokyo 105-6891 Japan
Phone 81-3-5402-6111 Fax 81-3-5402-4580

YASKAWA ELECTRIC AMERICA, INC.

2121 Norman Drive South, Waukegan, IL 60085, U.S.A.
Phone 1-847-887-7000 Fax 1-847-887-7370

MOTOMAN INC. HEADQUARTERS

805 Liberty Lane West Carrollton, OH 45449, U.S.A.
Phone 1-937-847-6200 Fax 1-937-847-6277

YASKAWA ELÉTRICO DO BRASIL COMÉRCIO LTDA.

Avenida Fagundes Filho, 620 Bairro Saude-Sao Páulo-SP, Brazil CEP: 04304-000
Phone 55-11-5071-2552 Fax 55-11-5581-8795

YASKAWA ELECTRIC EUROPE GmbH

Am Kronberger Hang 2, 65824 Schwalbach, Germany
Phone 49-6196-569-300 Fax 49-6196-888-301

Motoman Robotics AB

Box 504 S38525 Torsås, Sweden
Phone 46-486-48800 Fax 46-486-41410

Motoman Robotec GmbH

Kammerfeldstraße 1, 85391 Allershausen, Germany
Phone 49-8166-900 Fax 49-8166-9039

YASKAWA ELECTRIC UK LTD.

1 Hunt Hill Orchardton Woods Cumbernauld, G68 9LF, United Kingdom
Phone 44-1236-735000 Fax 44-1236-458182

YASKAWA ELECTRIC KOREA CORPORATION

Kipa Bldg #1201, 35-4 Youido-dong, Yeongdongpo-Ku, Seoul 150-010, Korea
Phone 82-2-784-7844 Fax 82-2-784-8495

YASKAWA ELECTRIC (SINGAPORE) PTE. LTD.

151 Lorong Chuan, #04-01, New Tech Park Singapore 556741, Singapore
Phone 65-282-3003 Fax 65-289-3003

YATEC ENGINEERING CORPORATION

Shen Hsiang Tang Sung Chiang Building 10F 146 Sung Chiang Road, Taipei, Taiwan
Phone 886-2-2563-0010 Fax 886-2-2567-4677

BEIJING OFFICE

Room No. 301 Office Building of Beijing International Club, 21
Jiangmenwai Avenue, Beijing 100020, China
Phone 86-10-6532-1850 Fax 86-10-6532-1851

SHANGHAI OFFICE

27 Hui He Road Shanghai 200437 China
Phone 86-21-6553-6600 Fax 86-21-6531-4242

YASKAWA JASON (HK) COMPANY LIMITED

Rm. 2909-10, Hong Kong Plaza, 186-191 Connaught Road West, Hong Kong
Phone 852-2803-2385 Fax 852-2547-5773

TAIPEI OFFICE

Shen Hsiang Tang Sung Chiang Building 10F 146 Sung Chiang Road, Taipei, Taiwan
Phone 886-2-2563-0010 Fax 886-2-2567-4677

SHANGHAI YASKAWA-TONGJI M & E CO., LTD.

27 Hui He Road Shanghai China 200437
Phone 86-21-6531-4242 Fax 86-21-6553-6060

BEIJING YASKAWA BEIKE AUTOMATION ENGINEERING CO., LTD.

30 Xue Yuan Road, Haidian, Beijing P.R. China Post Code: 100083
Phone 86-10-6233-2782 Fax 86-10-6232-1536

SHOUGANG MOTOMAN ROBOT CO., LTD.

7, Yongchang-North Street, Beijing Economic Technological Investment & Development Area,
Beijing 100076, P.R. China
Phone 86-10-6788-0551 Fax 86-10-6788-2878



YASKAWA

YASKAWA ELECTRIC CORPORATION